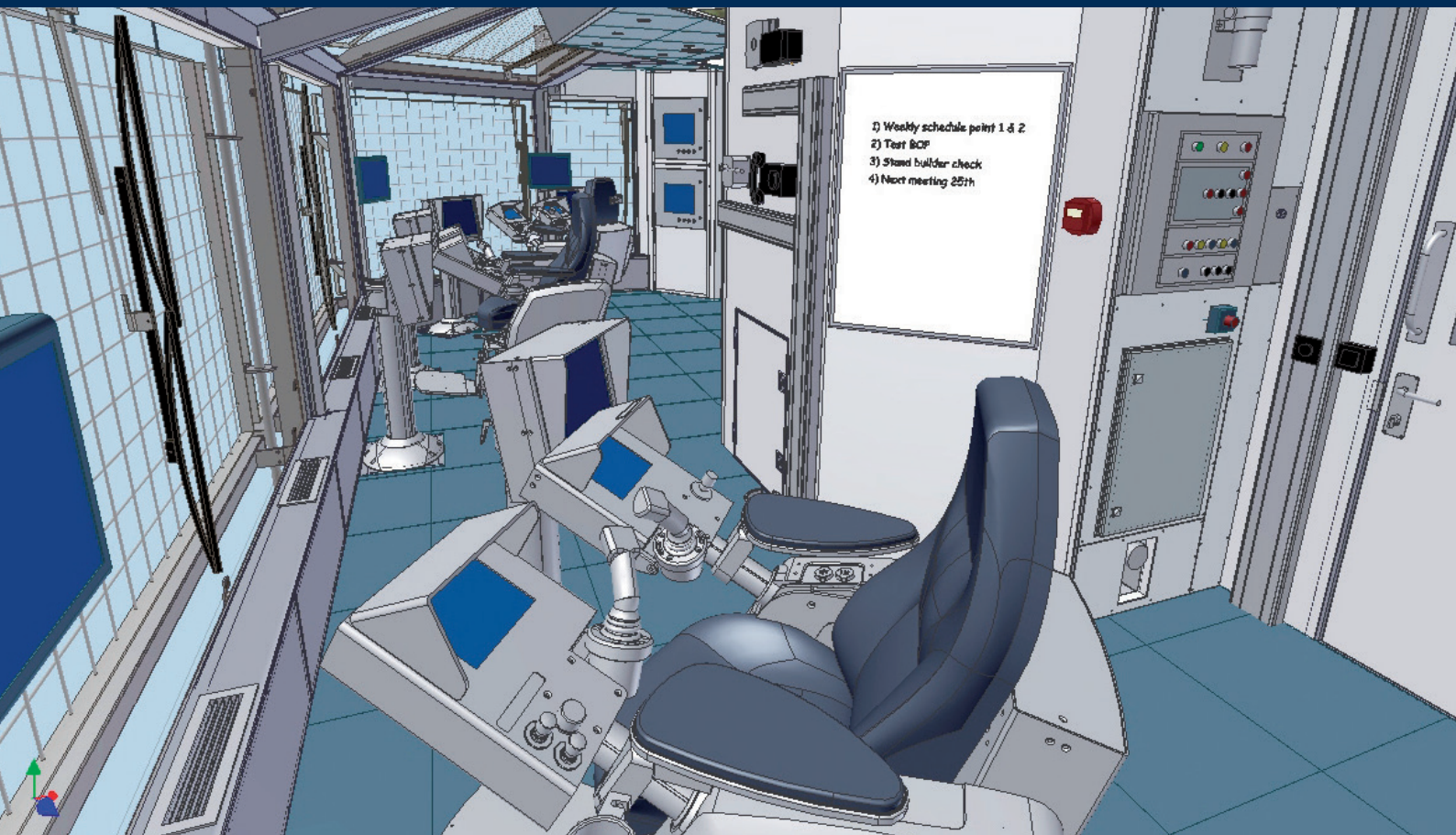
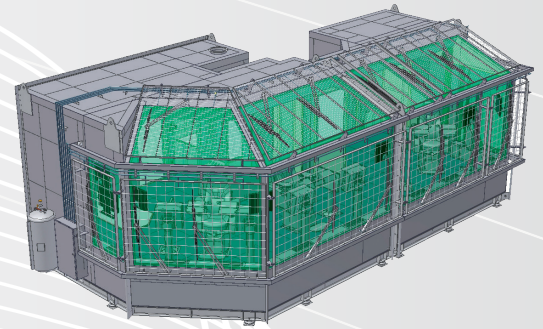


The ambassador for your equipment



Facts about Scancab

- Established in 1965. In the last 20 years we have had special focus on the offshore sector's requirements all over the world.
- Own design, project, production, electrical and documentation departments with extensive test programmes and facilities.
- Design and manufacturing of cabins and control rooms to the latest standards.
- Meets all safety and environmental standards.
- Our aim is constantly to put the individual in focus concerning safety, health and comfort in all our products.



- 6.500 m² production facilities.
- Worldwide after sales service.



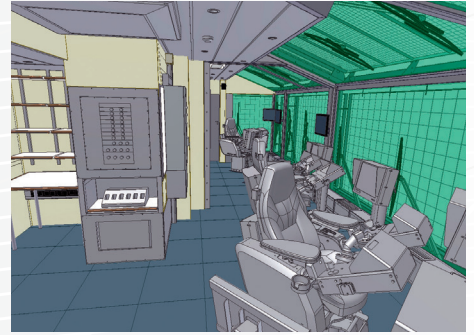
DCR

Drillers Control Rooms are designed to suit customers' requirements.

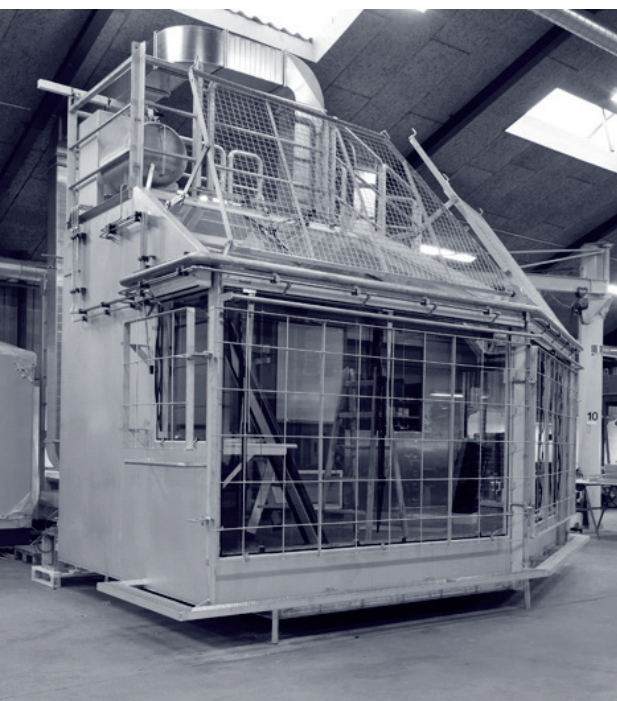
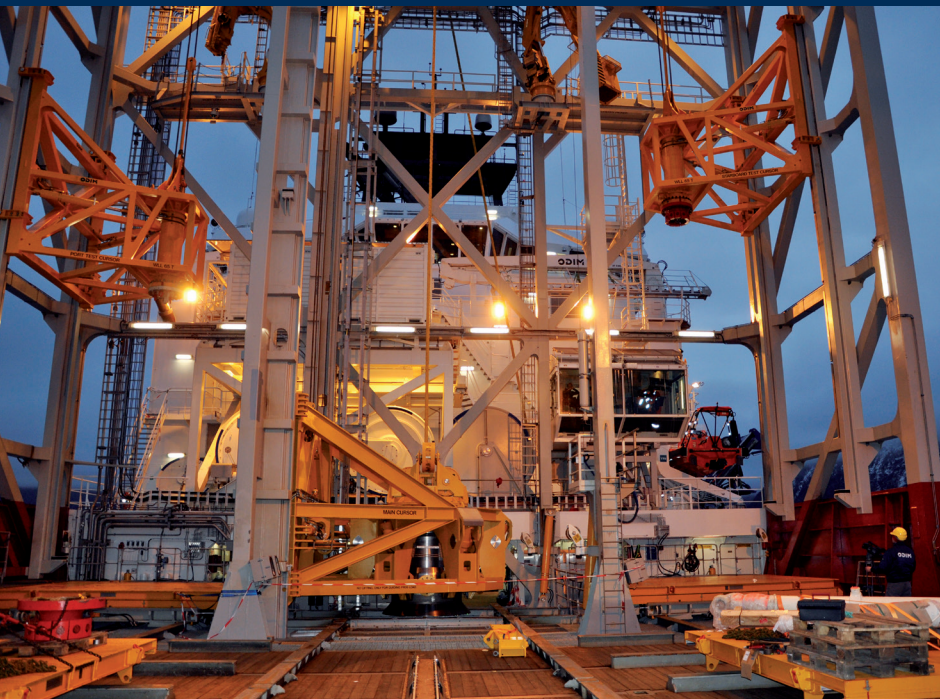
We require only a few outline dimensional criteria, and from those our engineers continue.

Our design is modulated in 3D to ensure trouble-free interface.

Constructions are manufactured in carbon steel and painted according to specifications or in stainless steel. DCR can be delivered fully equipped with HVAC and electrical assembly.

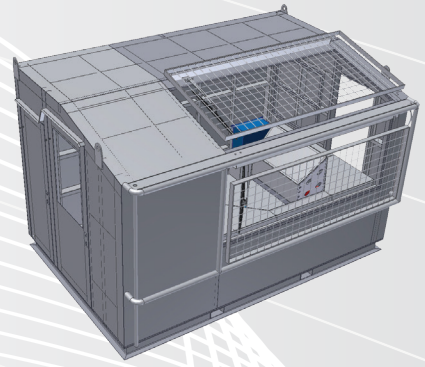


*Typical DCR layout.
Ready for plug and play.*



LIR / LER

Local Instrument Rooms and Local Equipment Rooms are always tailor-made to actual requirements. Designs are always made in a close dialogue with customers and our engineers. 3D design is modulated to ensure trouble-free interface. Constructions are manufactured in carbon steel and painted according to specifications or in stainless steel. LIR and LER can be delivered fully equipped with HVAC and electrical assembly.



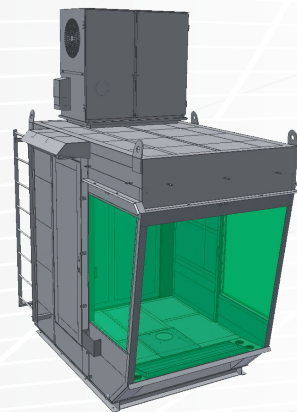
Cabin designed and manufactured for minus 40 deg. operation.



Crane Cabins & Pipe Handling Cabins

Scancab has a variety of standard crane cabins such as Pipe and Riser handling cabins, Derrickmann's and Assistant Derrickmann's cabins, as well as cabins for rig and service cranes.

All cabins can be manufactured according to customers' specifications in either carbon steel or stainless steel.



Cabin for Pipe Handler crane with roof-mounted Scancab HVAC for safe zone operation.



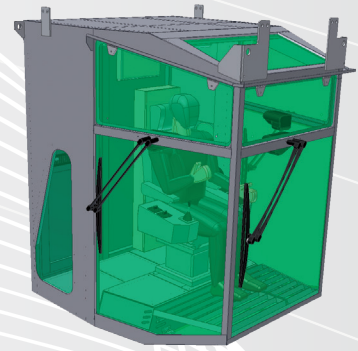
Winch Control Cabins

Winch Control Cabins are mostly delivered in pairs of 2 or 4 units per rig.

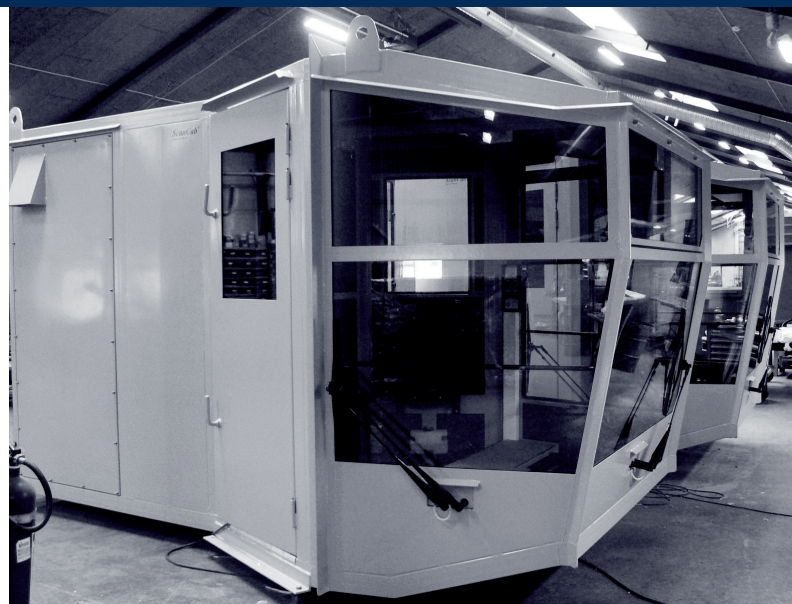
Scancab has different standard designs, and some of these are equipped with integrated hydraulic control room.

Many cabins are delivered for upgrading of existing rigs.

We have highly skilled employees who can handle pre-studies, rig surveys and assist in finding the ultimate cabin solution.



Scancab type 2500 in offshore standard fully equipped for winch operation.



Electrical Control & HVAC

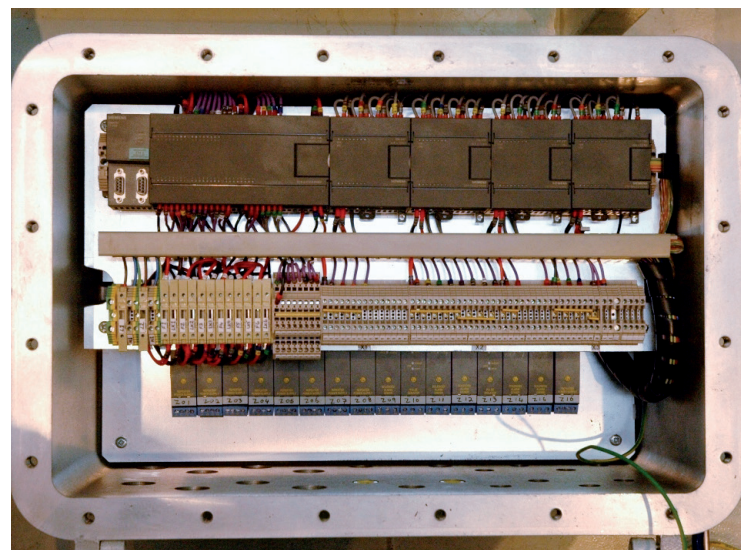
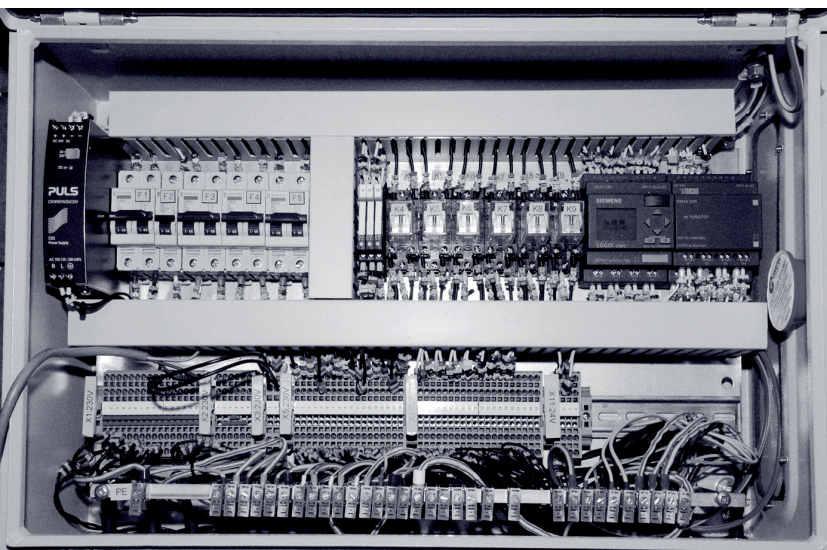
Scancab has its own electrical department handling design, execution and final testing.

One of our forces is working with ATEX and PLC controls.

On request we can provide a fully electrical turnkey solution, ready for plug and play. HVAC is a natural part of our cabin comfort and is normally designed in close dialog with customers. Scancab can deliver the required size HVAC, either for safe zone or hazardous area.



*Scancab standard HVAC unit
for safe zone operation.
3,3 Kw heating & 4,5 Kw cooling.*





Contact



Scancab is located in Kipleve
in the southern part of Denmark,
next to highway E45.

Kirkegaardsvej 29, Kipleve
DK - 6200 Aabenraa
Phone +45 7468 7701
Fax +45 7468 7472
Mail scancab@scancab.dk
Web www.scancab.com